

Public Teleconference March 17, 2015



March 17, 2015

International St. Lawrence River Board of Control



Regulation of Lake Ontario is possible due to:

- Boundary Waters Treaty of 1909
 - Established the IJC
 - Set order of precedence of interests
- 1952 IJC Order of Approval
 - Approved construction of hydropower projects which allowed outflows to be controlled
- 1956 Supplementary Order
 - Defined criteria consistent with the Treaty
- Plan 1958-D
 - Established method to manage flow from Lake Ontario
- 2015 Great Lakes Adaptive Management Committee
 - Established to monitor the performance of the regulation plan on an ongoing basis

March 17, 2015

International St. Lawrence River Board of Control



WATER LEVELS

	Actual*	Compared To	
	15 March 2015	March Average**	Last Year
Lake Superior	183.42 m (601.76 ft)	+19 cm (+8 in)	+18 cm (+7 in)
Lake Michigan-Huron	176.48 m (579.00 ft)	+19 cm (+8 in)	+53 cm (+21 in)
Lake Erie	174.00 m (570.86 ft)	-7 cm (-3 in)	+2 cm (+0.8 in)
Lake Ontario	74.38 m (244.03 ft)	-29 cm (-11 in)	-16 cm (-6 in)
Lake St. Lawrence	72.39 m (237.50 ft)	-33 cm (-13 in)	+7 cm (+3 in)
Lake St. Louis	20.84 m (68.37 ft)	-50 cm (-20 in)	-26 cm (-10 in)
Montreal Harbour	6.06 m (19.88 ft)	-82 cm (-32 in)	-22 cm (-9 in)

*Preliminary.

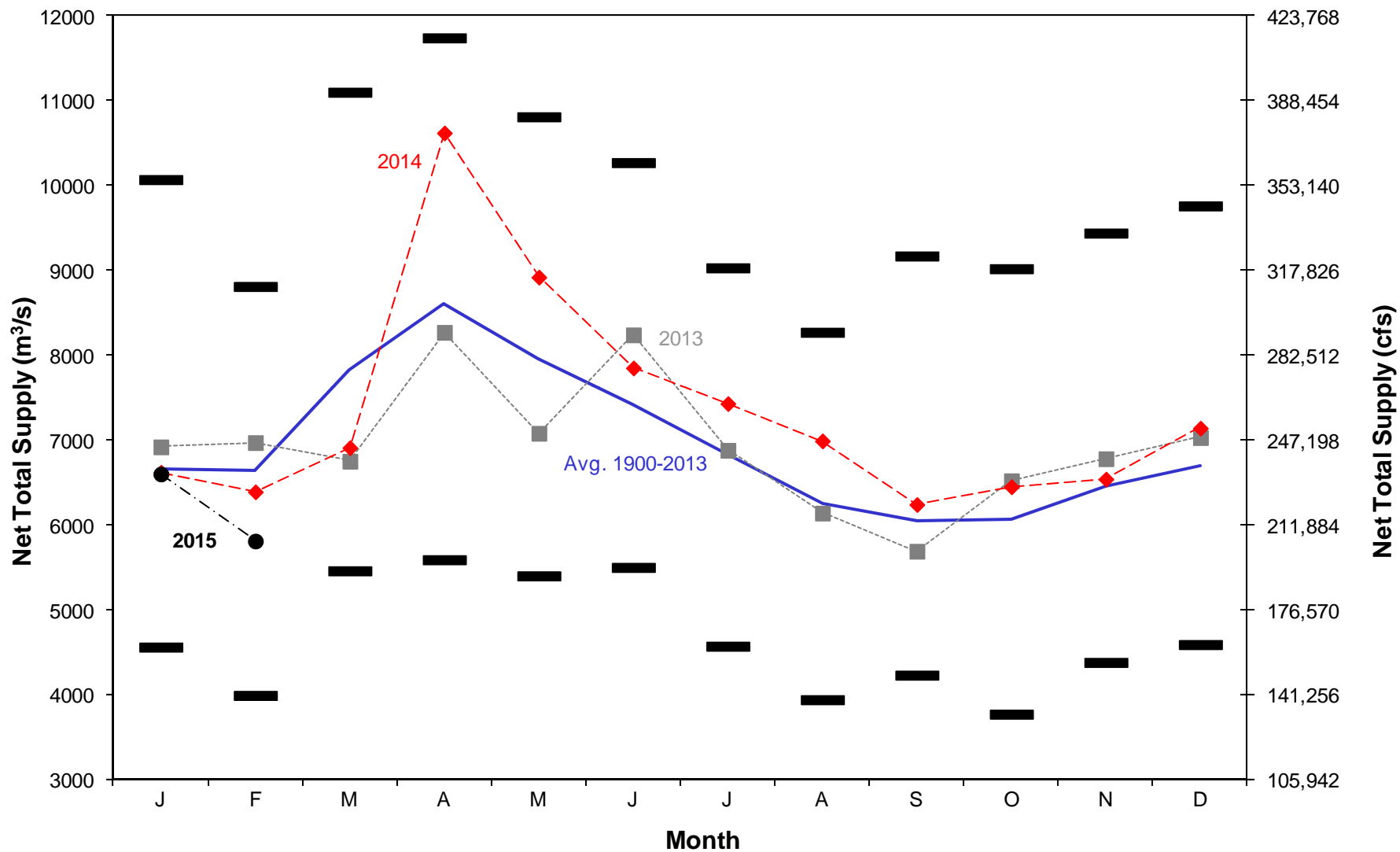
**Statistics: Great Lakes: 1918-2013; St. Lawrence River: 1960-2013; Montreal: 1967-2013.

March 17, 2015

International St. Lawrence River Board of Control



Monthly Net Total Supplies to Lake Ontario

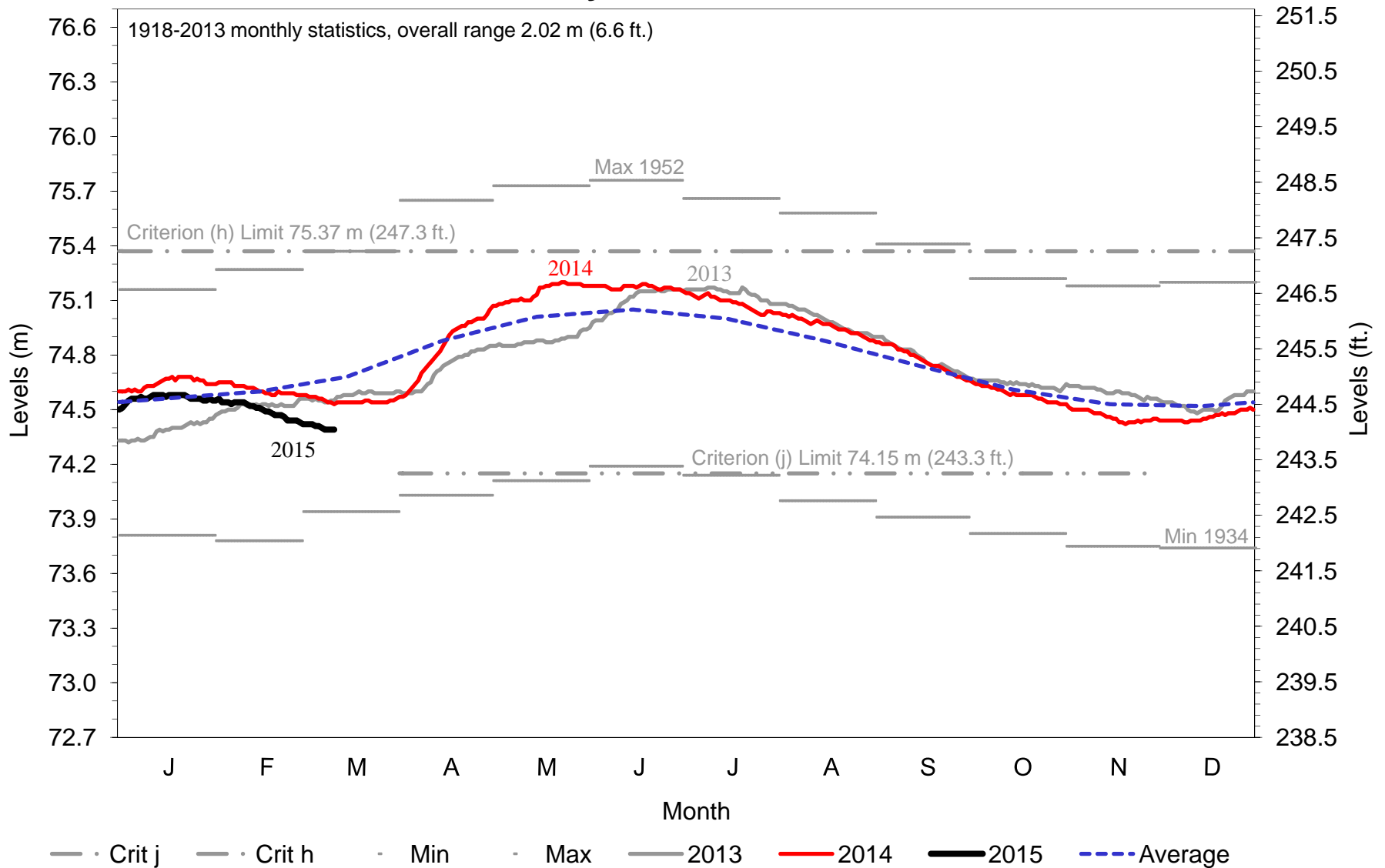


March 17, 2015

International St. Lawrence River Board of Control



Daily Lake Ontario Levels

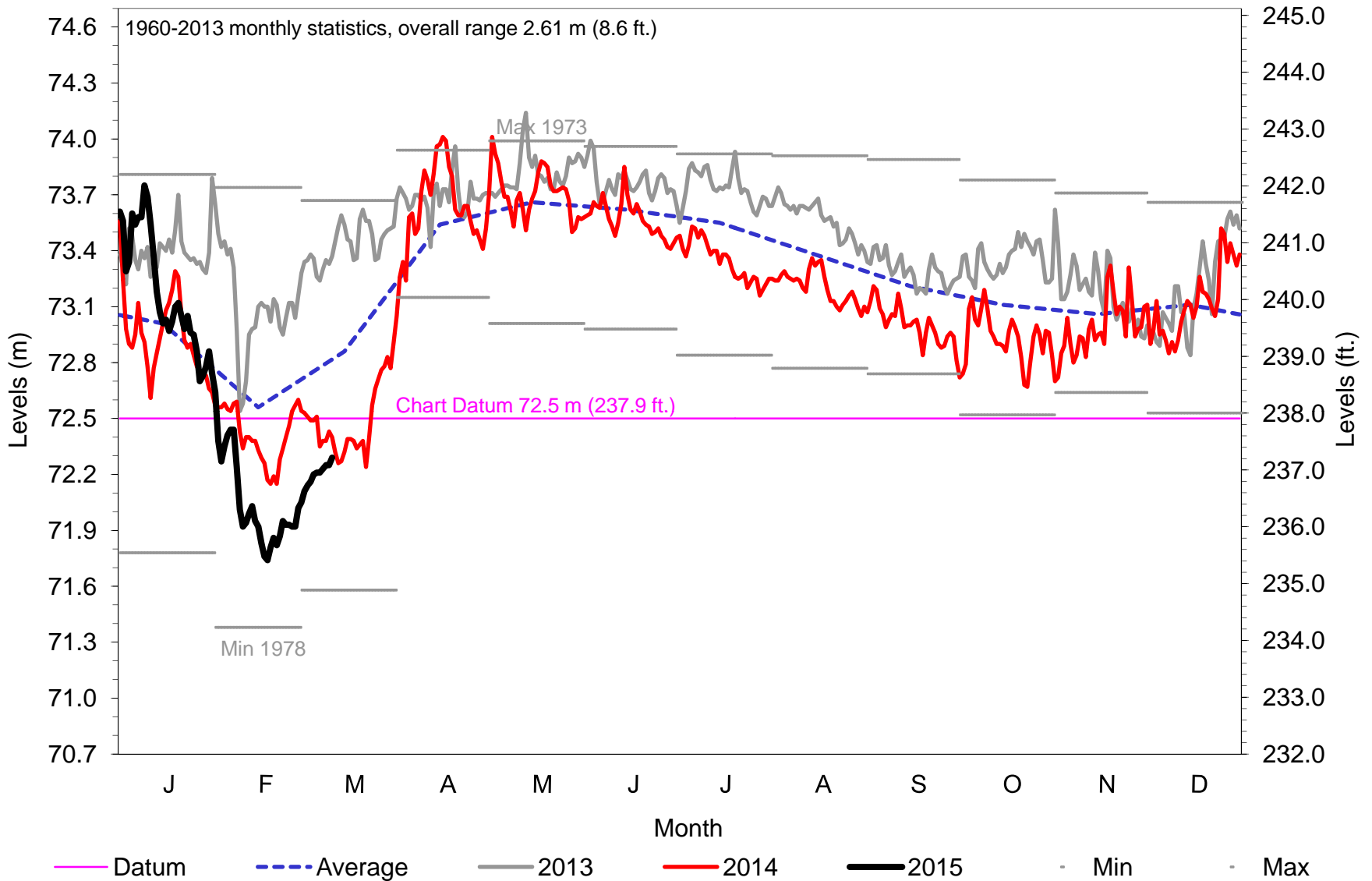


March 17, 2015

International St. Lawrence River Board of Control



Daily Lake St. Lawrence Levels @ Long Sault Dam

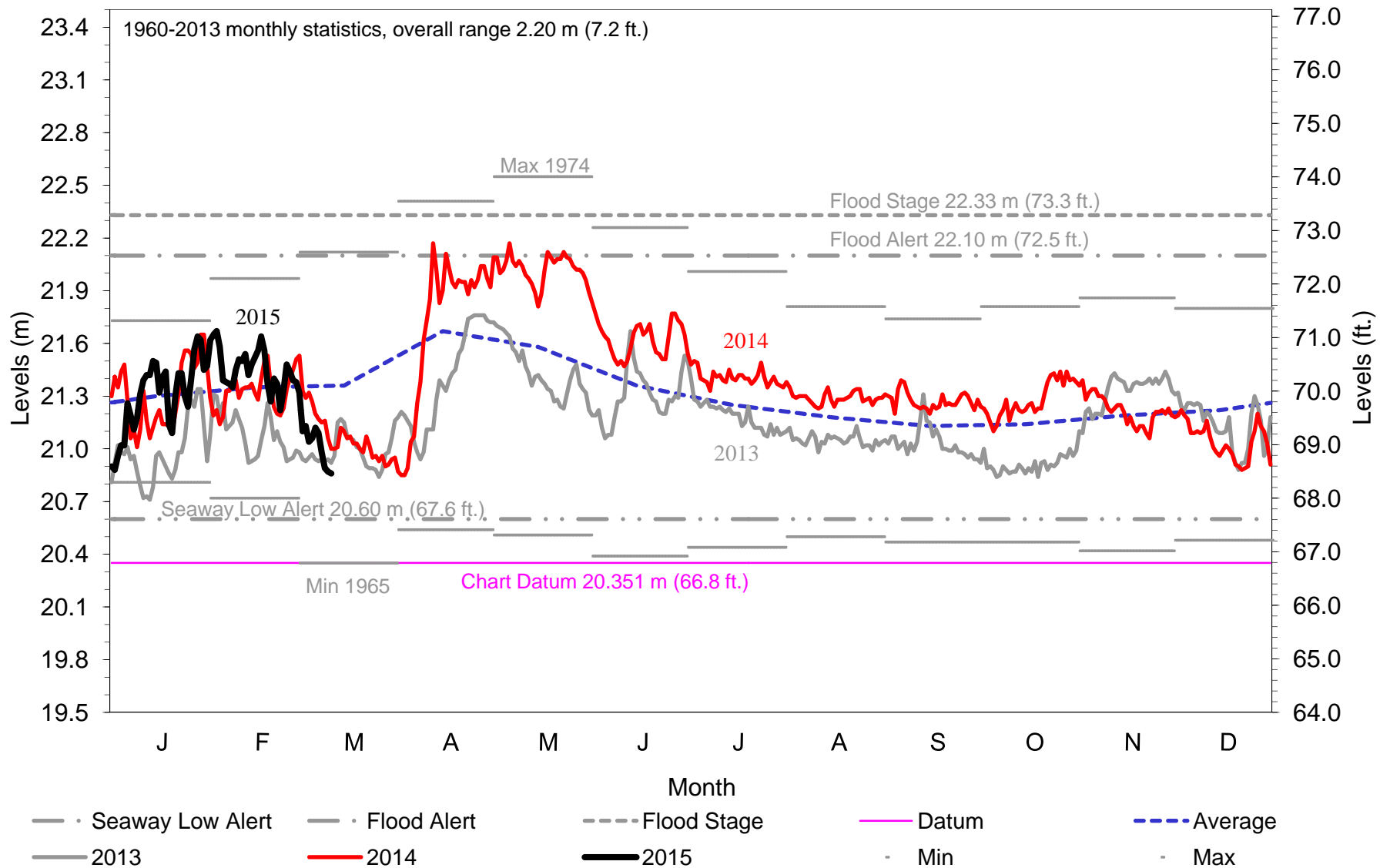


International St. Lawrence River Board of Control

March 17, 2015



Daily Lake St. Louis Levels @ Pointe-Claire

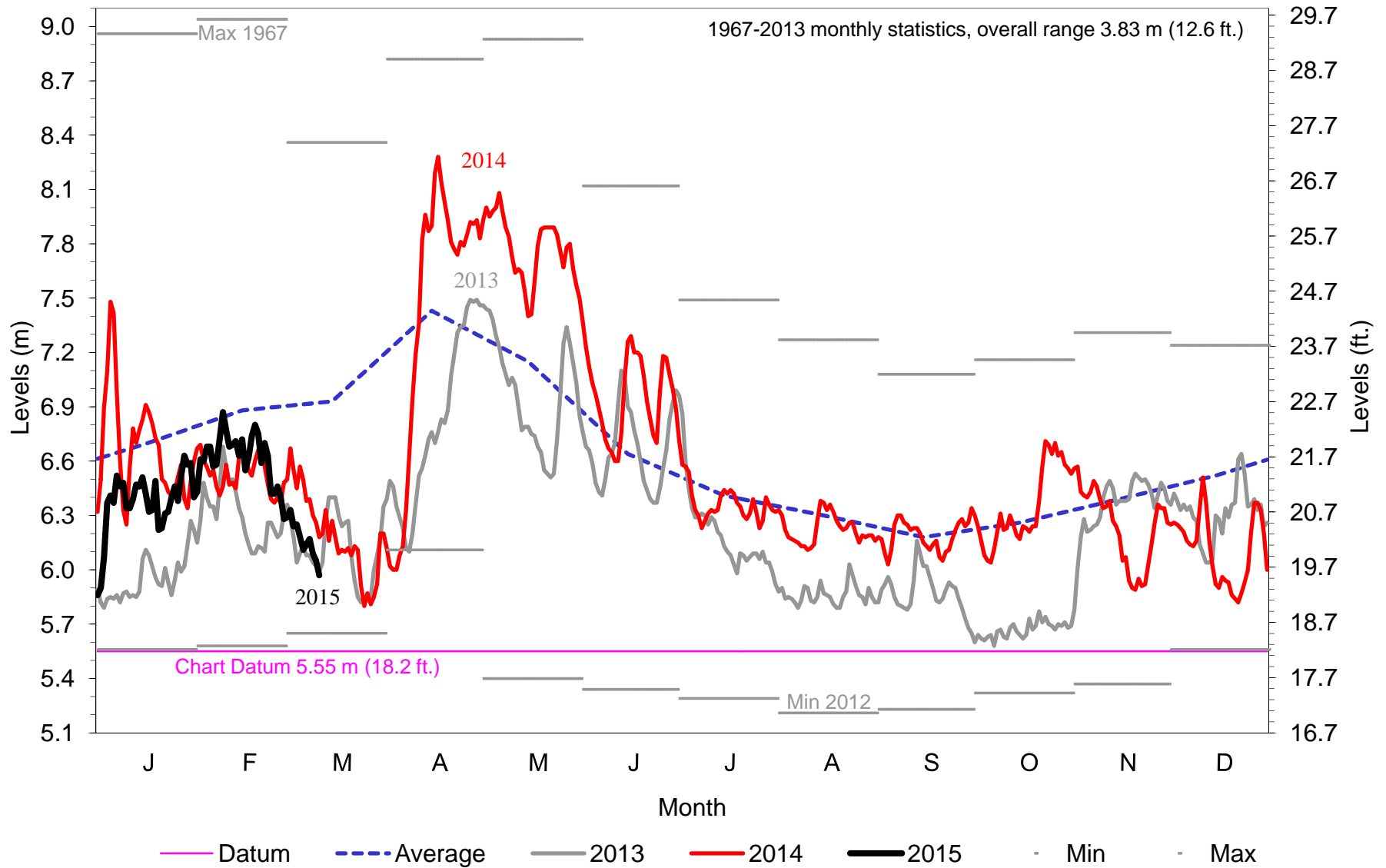


March 17, 2015

International St. Lawrence River Board of Control



Daily Port of Montreal Levels @ Jetty #1

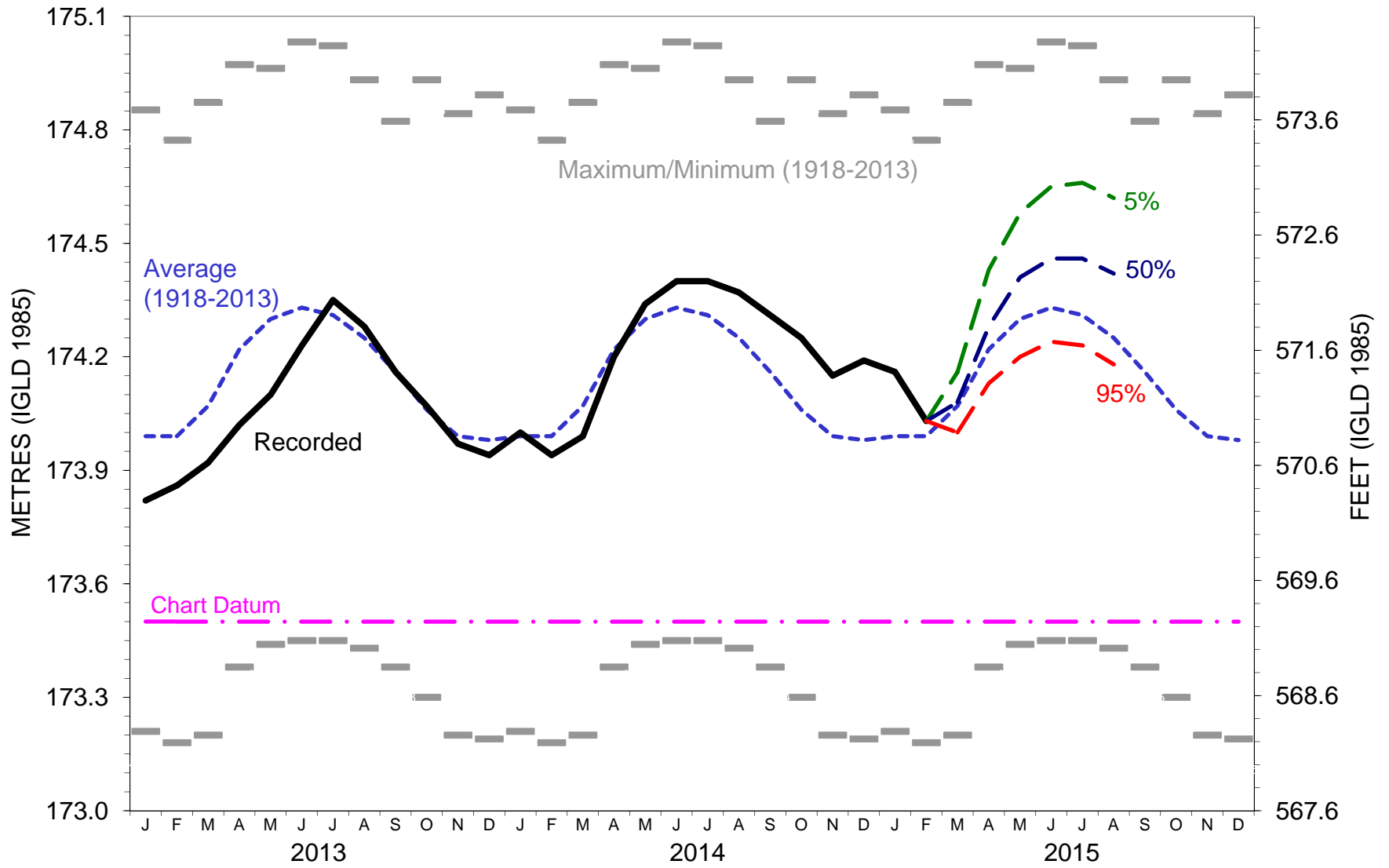


March 17, 2015

International St. Lawrence River Board of Control



LAKE ERIE MONTHLY WATER LEVEL FORECAST

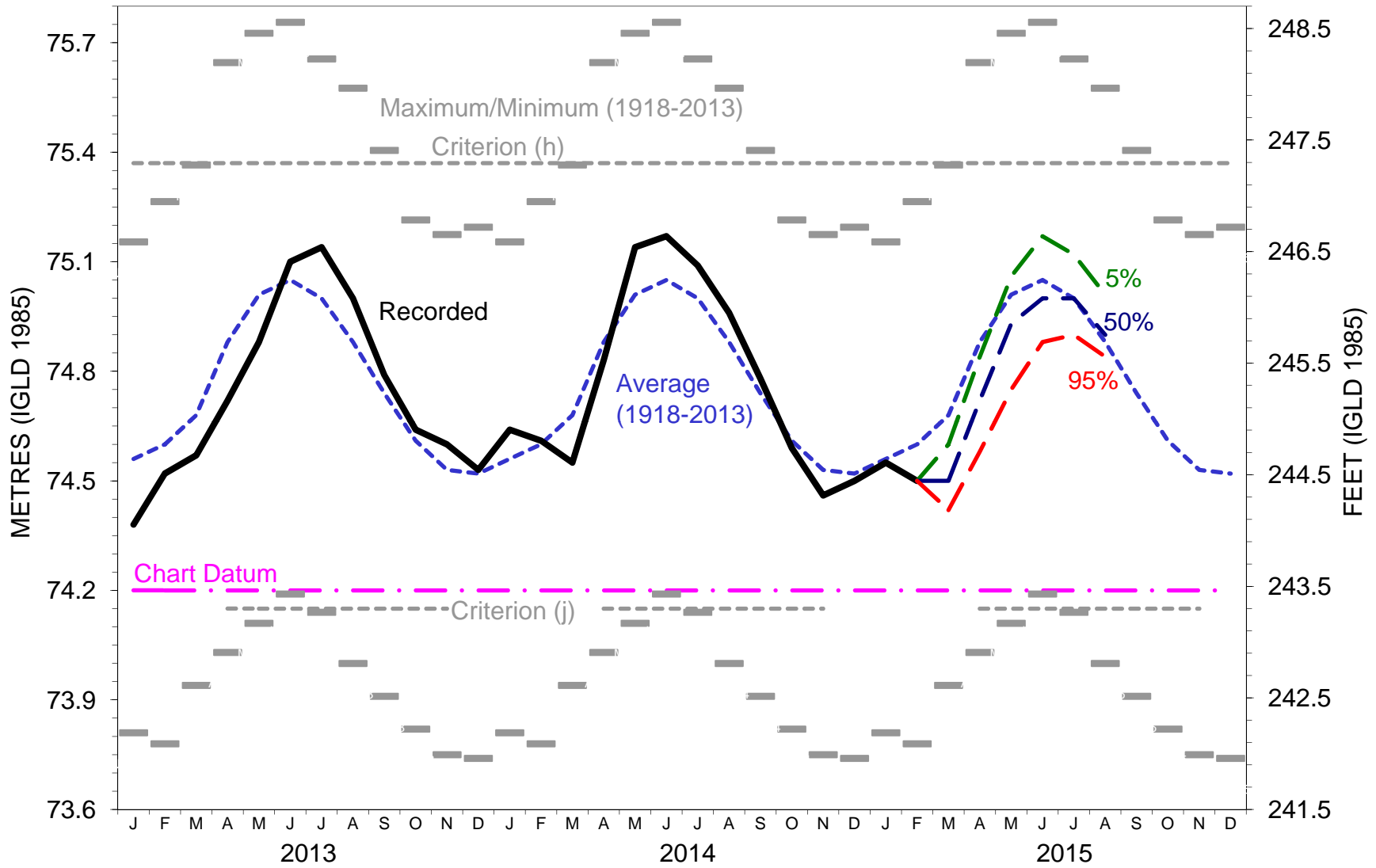


March 17, 2015

International St. Lawrence River Board of Control



LAKE ONTARIO MONTHLY WATER LEVEL FORECAST

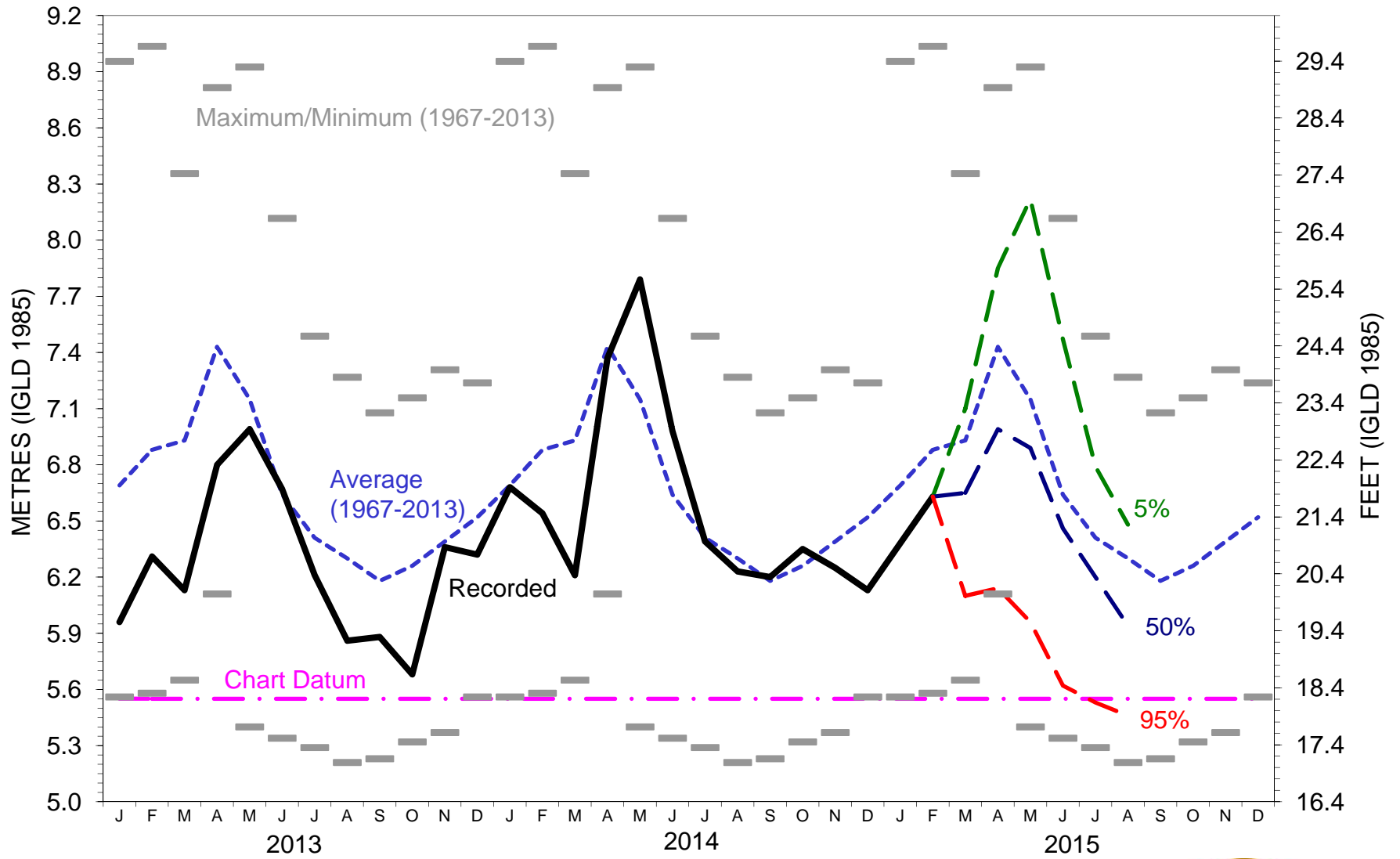


March 17, 2015

International St. Lawrence River Board of Control



MONTREAL HARBOUR MONTHLY WATER LEVEL FORECAST



International St. Lawrence River Board of Control

March 17, 2015



Current Regulation Strategy

- Outflows in March continue to follow Plan 1958-D,
- Lake Ontario outflows be adjusted, if necessary, to facilitate the maintenance of a safe and stable ice cover along the St. Lawrence River,
- Continue to permit under- or over-discharges (either below or above those of Plan 1958-D) that may be necessary to address unforeseen critical condition.
- The Board will meet again in late April to re-assess this strategy as ice breaks up and navigation begins.

March 17, 2015

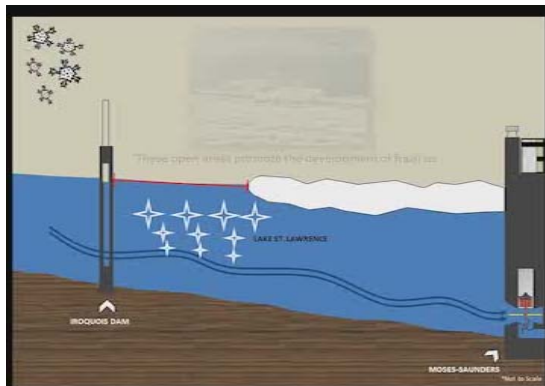
International St. Lawrence River Board of Control



Learning Modules

- 1: Overview
- 2: Lake Ontario-Upper St. Lawrence River Levels and Outflows
- 3: Peaking & Ponding
- 4: Iroquois Dam
- 5: Ice Formation
- 6: Wind Effects on the upper St. Lawrence River
- 7: Lower St. Lawrence River Impacts

Find them at: http://ijc.org/en_/islrbc/Learning_Modules



International St. Lawrence River Board of Control

March 17, 2015



Public Teleconference March 17, 2015



March 17, 2015

International St. Lawrence River Board of Control



St. Lawrence Board website

English - http://ijc.org/en_/islrbc

French - http://ijc.org/fr_/islrbc

March 17, 2015

International St. Lawrence River Board of Control

