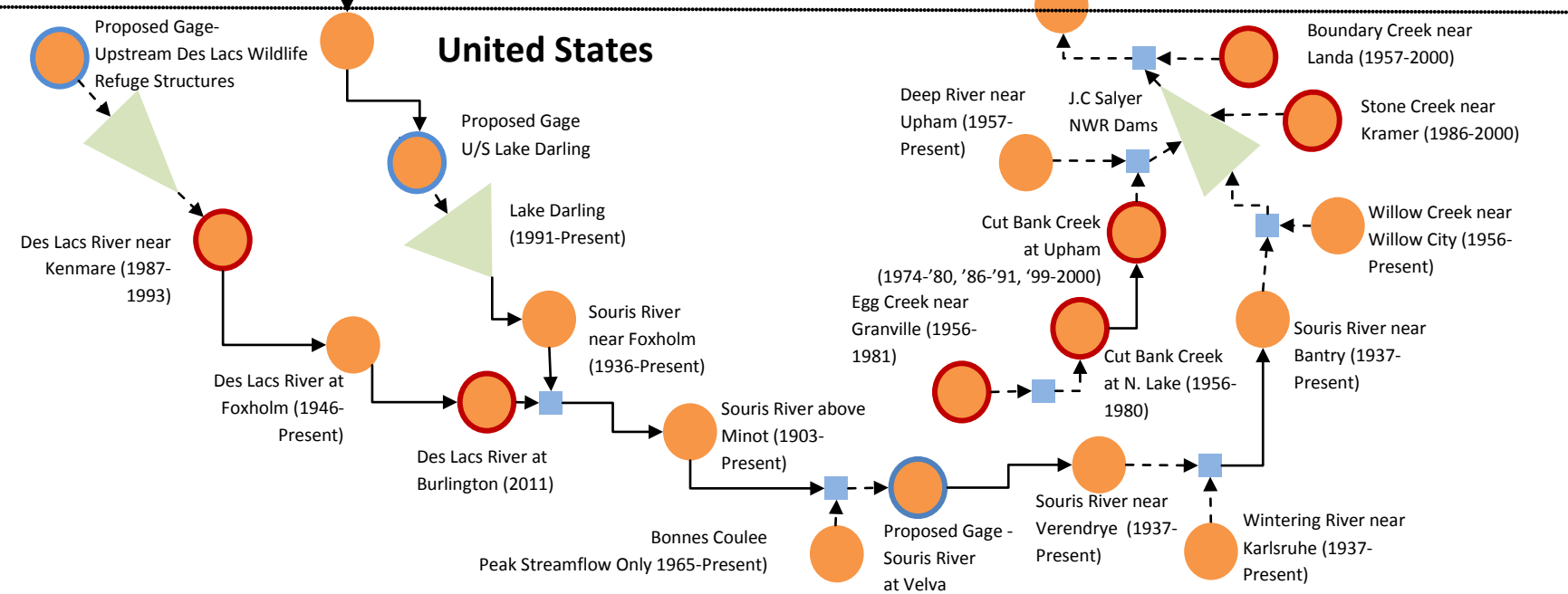


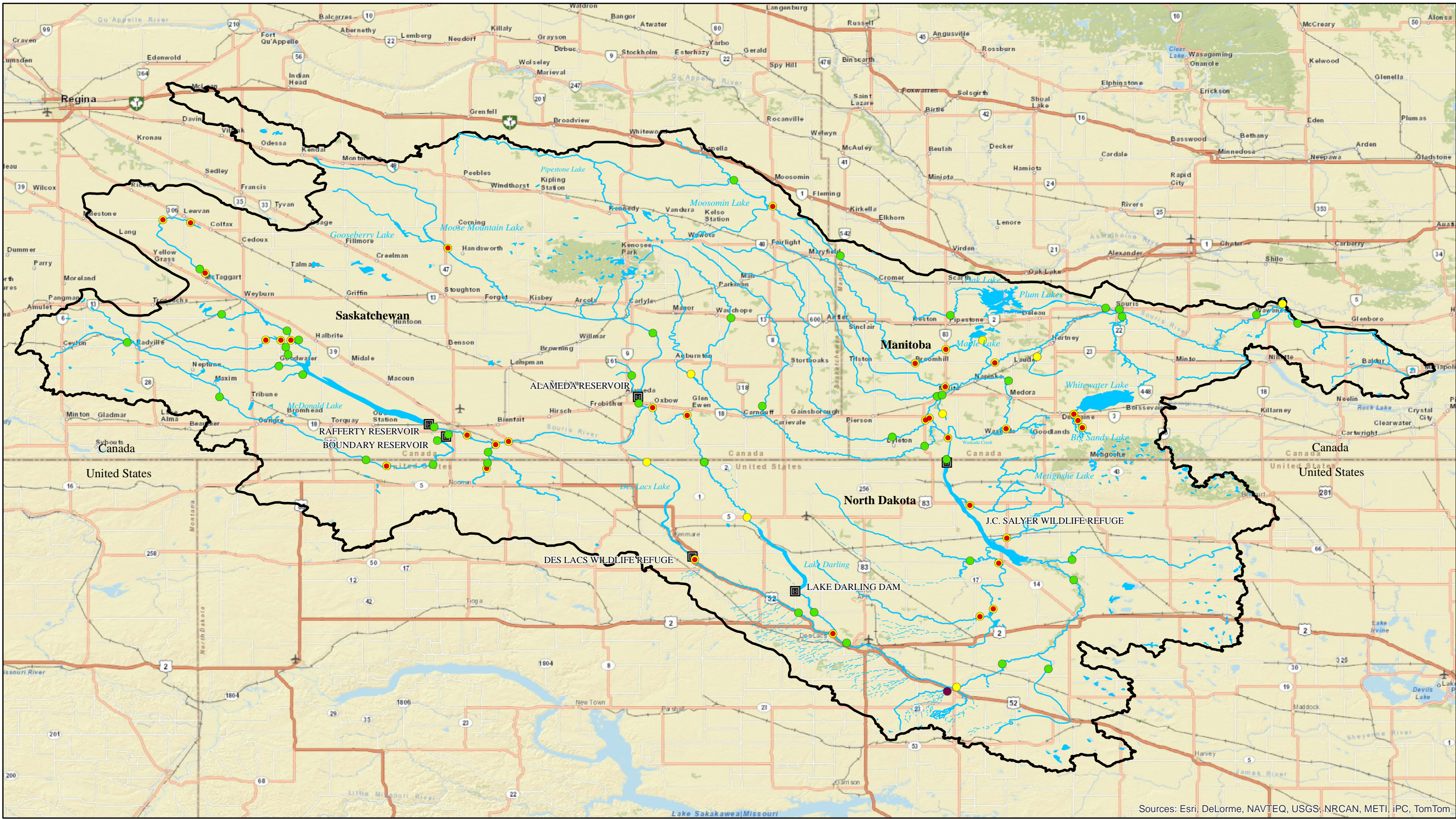
Key

- Watershed Outlet ■
- Diversion Structure →
- Direct Routing Reach - - ->
- Routing Reach →
- Junction ■
- Active Streamflow Gauge ●
- Major Structure ▲
- Inactive Streamflow Gauge ●
- Proposed Streamflow Gauge ●
- Significant Natural Lake ⬠

Appendix B:
Souris (Mouse) River Basin
Topology Diagram

Not to Scale





Sources: Esri, DeLorme, NAVTEQ, USGS, NRCAN, METI, IPC, TomTom

Legend

● Active Daily Streamflow Gages	Major Structures	Basin Coulees
● Discontinued Daily Streamflow Gages	Basin Rivers	Boundary Diversion
● Proposed Streamflow Gages	Souris River Basin	
● Peak Streamflow Gage Only		

Appendix C: Souris (Mouse River) Watershed Points of Hydrological Significance

