

---

# INTERNATIONAL RAINY LAKE BOARD OF CONTROL (IRLBC) INTERNATIONAL RAINY RIVER WATER POLLUTION BOARD (IRRWPB)

## NEWSLETTER

1<sup>st</sup> Quarter 2011

---

This newsletter provides a summary of the activities of the International Rainy Lake Board of Control (IRLBC) and the International Rainy River Water Pollution Board (IRRWPB) during the 1st Quarter (January to March) of 2011.

### *Basin Conditions and Regulation*

Namakan Lake began 2011 at 84 % of its rule curve band and declined gradually through the winter to mid-band at the end of March. Inflows to the lake averaged 71 %ile for the quarter.

Rainy Lake began the quarter somewhat lower, at only 29 % of band. Inflows for January to March averaged 43 %ile and the lake ended the quarter at 42% of band. Water levels, inflows and outflows for both lakes are shown on the attached graphs. A legend follows the graphs.

Basin precipitation for the Rainy-Namakan basin over the winter of 2010-2011 (November to March) was above normal (61 %ile). The March 1 snow survey conducted by the United States Army Corps of Engineers provided an estimated snow pack water equivalent of 78 %ile. Further snow surveys by Ontario Power Generation and others through March indicated significantly above normal snow pack through the end of March. Spring freshet had not yet begun by the end of March, as temperatures remained somewhat below normal through the month.

### *Board Meetings and Activities*

The Boards held two conference calls during the quarter – on February 24 and March 31.

Items discussed on the two conference calls and other items of note during the quarter included the following:

1. On February 4, Gail Faveri, P. Eng. was appointed Canadian Chair for the International Rainy Lake Board of Control by the IJC. Contact information for the members of both boards is available on their respective websites.
2. The Boards reviewed a draft agreement between the IJC and Voyageurs National Park for a project manager to oversee scoping and implementation of studies identified in a Plan of Study report by the IJC's 2000 Rule Curve Assessment Workgroup, as described in previous



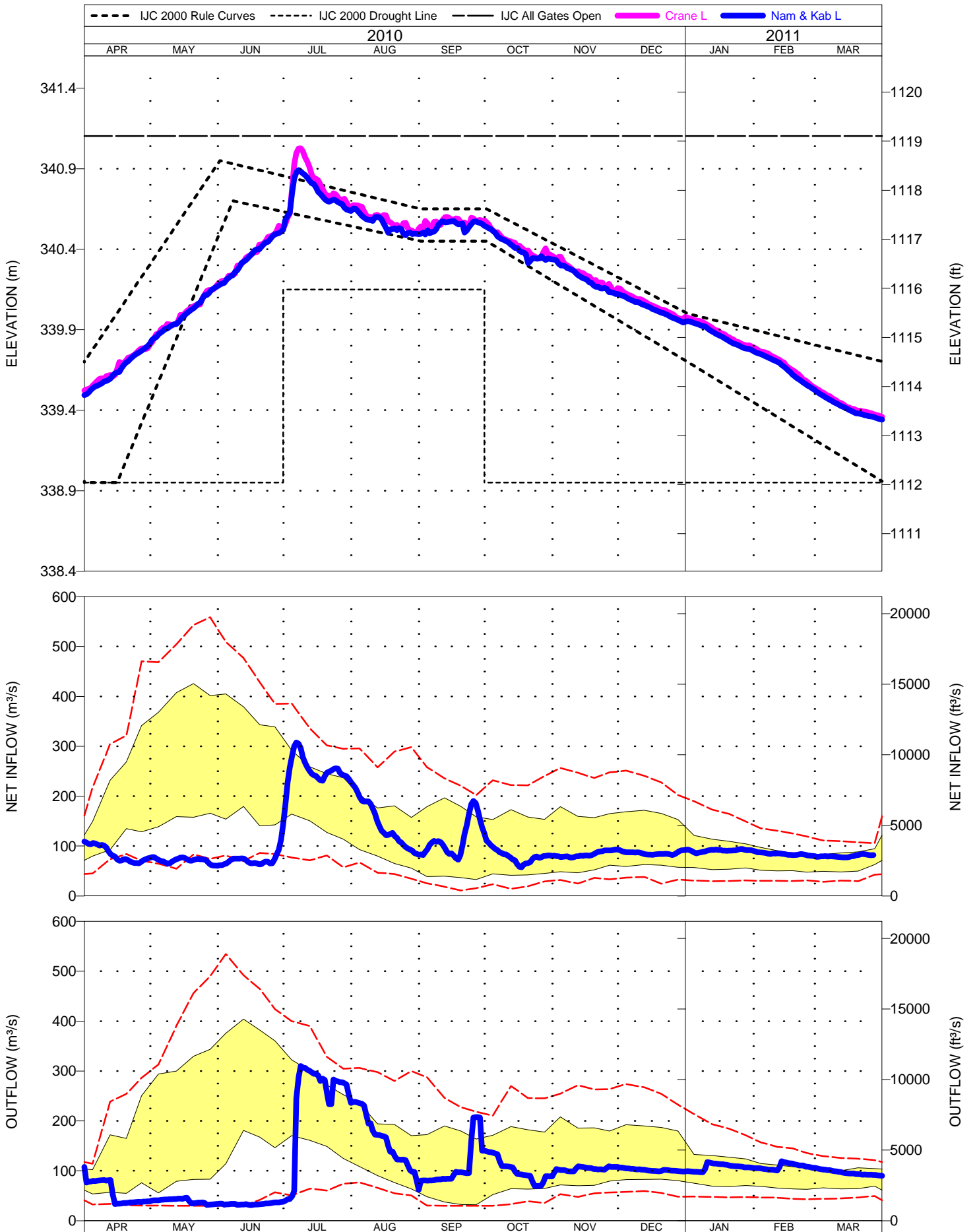
A February sunrise on  
Namakan Lake

Photo: Lee Grim

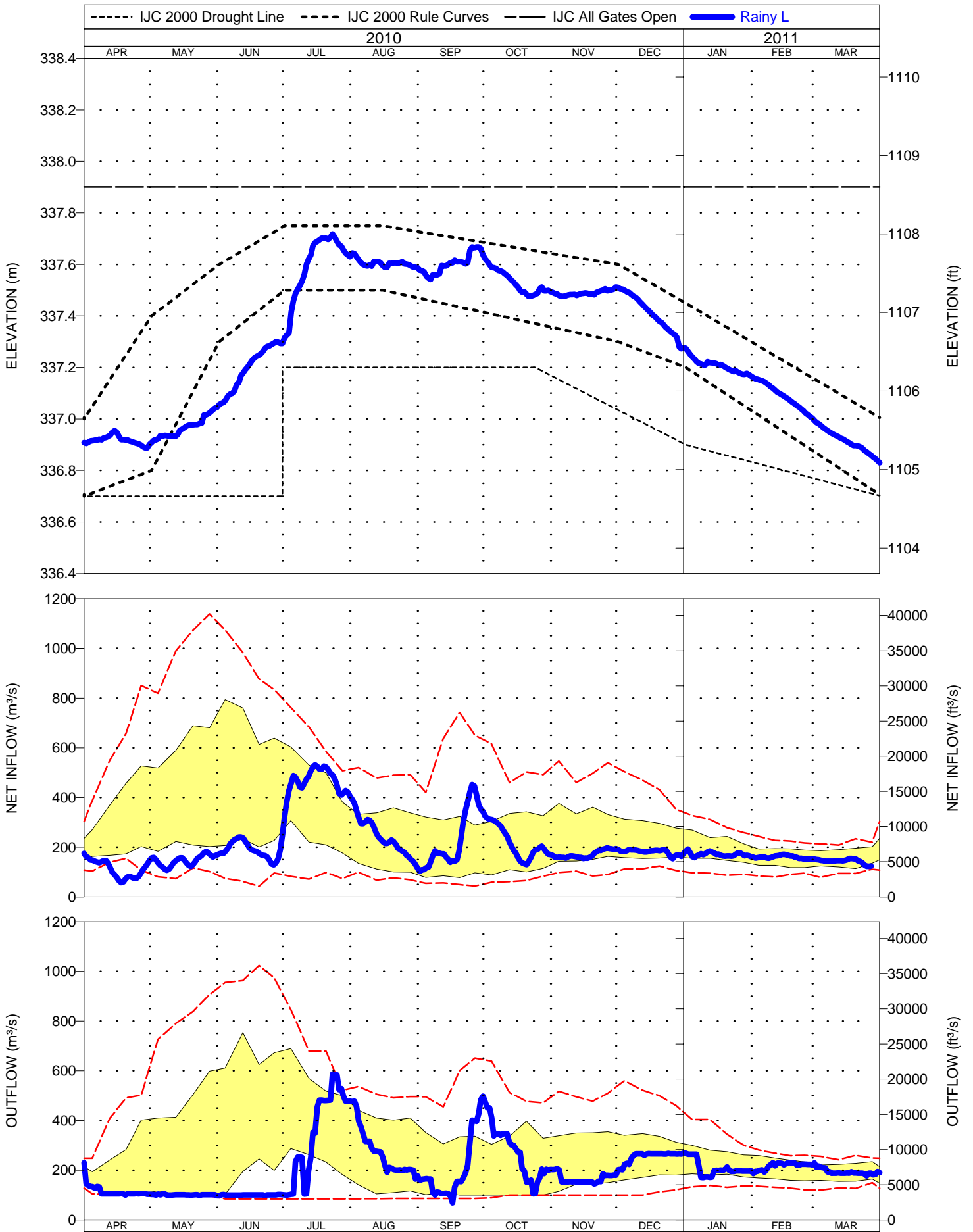
newsletters. This agreement was formally put in place on March 11.

3. As noted in previous newsletters, the IJC established an International Lake of the Woods and Rainy River Watershed Task Force in October 2010 to assist it with a reference from the governments of the United States and Canada regarding bi-national management in the Lake of the Woods and Rainy River watersheds and the IJC's potential role in this management. The Task Force issued an Interim Report on February 24. A draft final report is expected in May. The Task Force will have a round of Public meetings in the watershed in mid-June to hear comments on the draft Final Report; please refer to their web site: [http://www.ijc.org/conseil\\_board/rainy\\_river\\_watershed/](http://www.ijc.org/conseil_board/rainy_river_watershed/) for further details.
4. The Boards provided a letter of support to the Voyageurs Joint Powers Board (VJPB) to be used in their quest for funding of sewers in communities on lakes associated with Voyageurs National Park. The VJPB includes Couchiching County, Ash River, Crane Lake Associations and Voyageurs National Park (VNP). The proposed sewer projects will improve water quality and reduce nutrient inputs to the lakes from septic systems.
5. During the quarter the Boards discussed and prepared several project proposals for submission to the IJC for possible funding under the International Watersheds Initiative (IWI).

# NAMAKAN LAKE



# RAINY LAKE



## LEGEND - LEVEL AND FLOW GRAPHS

